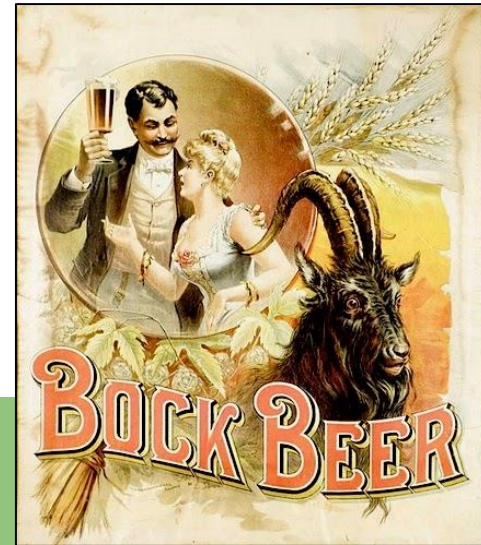
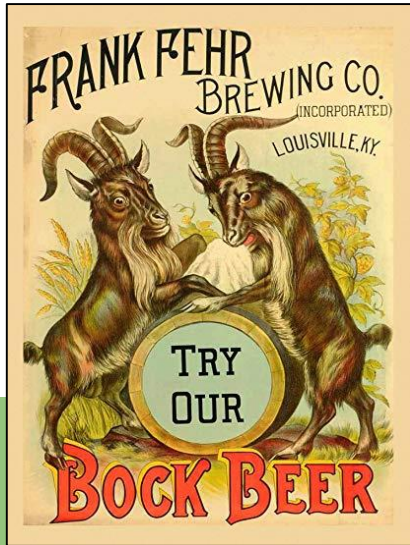


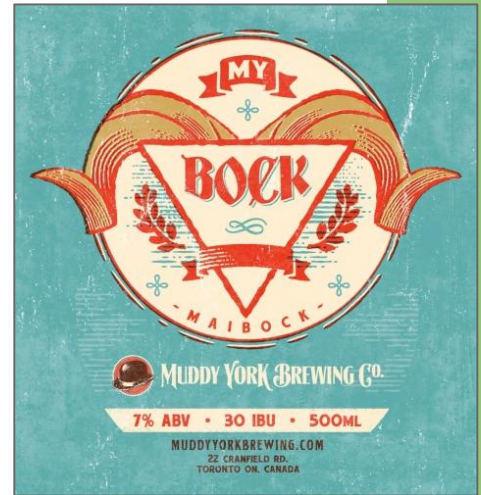
# BOCK!

**Style of the Month - January 2020**

# WHAT DOES A GOAT AND A BOCK HAVE IN COMMON?



THE STYLE ORIGINATED WITH  
MONKS IN EINBECK, GER  
MUNICH BREWERS ADOPTED THE STYLE BUT  
MISPRONOUNCED IT AS "EINBOCK"



# BOCK

## 4C. Helles Bock

- Pale, strong, malty German lager. Little to no caramel flavor, light DMS allowed, moderate to no hop flavor.

## 6C. Dunkels Bock

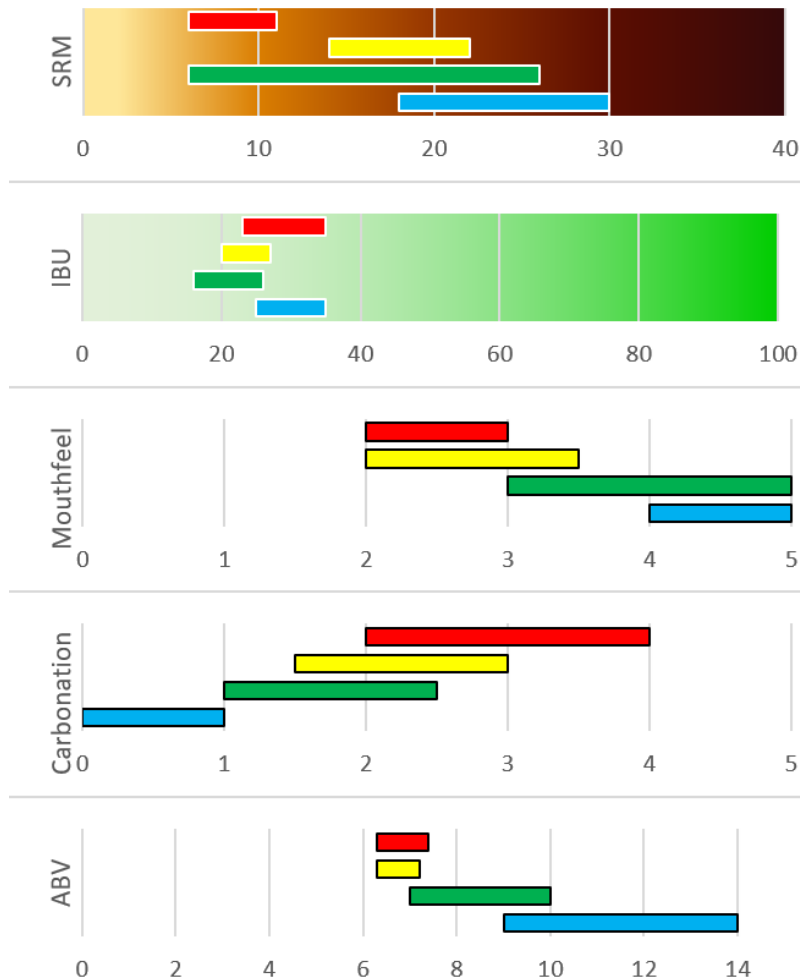
- Dark, strong, malty German lager. Bready-malty aroma and rich maltiness. Only enough hops to support the malt.

## 9A. Doppelbock

- Rich, clean German lager. Smooth and warming alcohol. Strong maltiness, virtually no hop aroma.

## 9B. Eisbock

- Strong, dark, clean German lager. Smooth alcohol presence. Viscous but not syrupy. Brewed by freezing a doppelbock.



# LCBO EXAMPLES OF STYLE

## Doppelbock Dunkel

330 mL bottle | LCBO#: 100487

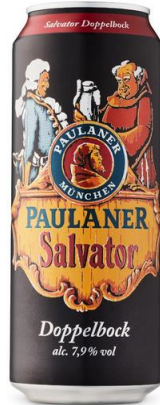
**\$2.30**



## Paulaner Salvator Doppelbock

500 mL can | LCBO#: 499103

**\$2.95**



## Einbecker Ur Bock Hell

*Coming Soon*



## DAB Maibock

500 mL can | LCBO#: 346247

**\$2.60**



## Holsten Maibock

500 mL can | LCBO#: 432856

**\$2.65**



THESE 2 BOCK STYLES OFTEN  
DISPLAY NOTICEABLE LEGS

WHAT ARE THE STYLES?  
WHAT ARE LEGS?



# DOPPELBOCK AND EISBOCK

SURFACE TENSION PULLS THE LIQUID  
UP, ALCOHOL EVAPORATES, DROPLETS  
FALL DOWN INSIDE THE GLASS



# MARCH:

## STANDARD IPA & OTHER IPA

**21A American IPA**

**21B7 NEIPA**

**12C English IPA**

**PRX2 IPA Argenta**

**21B Specialty IPA**

**21B1 Belgian IPA**

**21B2 Black IPA**

**21B3 Brown IPA**

**21B4 Red IPA**

**21B5 Rye IPA**

**21B6 White IPA**

**22A Double IPA**



# MARCH:

## STANDARD IPA & OTHER IPA



Chris Hughes 'Black Hop Down',  
Black IPA, Henderson Cup Winner  
Look out for it in Feb!

Recipe Database  
Examples

Club Brew: Citra SMaSH

Club Brew: Black IPA

Matti Cowan: Black IPA

Iain Robertson: Red IPA 🏆🏆

Mike Van: NEIPA 🏆🏆🏆...